



CLASS III EVS
CHAPTER-3
THE GREEN WORLD

KEY NOTES:

There are different varieties of plants:

- i. Trees: big, tall and strong plants.
- ii. Shrubs: smaller than trees, have thin hardy stem and look bushy.
- iii. Herbs: very small plants having soft, green stem and leaves.
- iv. Climbers: plants which have weak stems and need support to grow.
- v. Creepers: plants that have weak and tender stems, which grow along the ground.

Two main parts of a plants: Shoot and Root system

Leaves: - A flat, broad, green colored part of the plant which have chlorophyll and is the site of photosynthesis.

Photosynthesis: - It is a process of preparation/manufacture of food by green plants using carbon dioxide and water as raw materials in presence of sunlight with the help of chlorophyll.

Textual Questions and Answers

1. Name two plants that give us cereals.

Ans. Rice, wheat.

2. Name two plants that give us pulses.

Ans. Pea, Lentils.

3. Name two plants that give us fruits.

Ans. Apple, mango.

4. Name two plants that give us vegetables.

Ans. Cabbage, carrot

5. Name two plants that give us spices.

Ans. Coriander, turmeric

6. Name two plants that give us medicines.

Ans. Tulsi, Mint.

7. Name two plants that give us scent.

Ans. Jasmine, Lavender.

8. Name two plants that give us oil.

Ans. Mustard, Groundnut.

9. Name two plants that give us timber.

Ans. Teak, Sheesham.

II. read the clues and give the name of the plants.

1. I can serve you as a plate. Banana plant
2. I am used to make chutney. mint
3. I make your mouth sour. Lemon
4. I make you energetic with my juice. sugarcane

Extra Questions and Answers.

Q1. What are trees.

Ans. Trees are plants which are big, tall and strong.

Q2. What are shrubs?

Ans. Shrubs are plants which are smaller than trees and have thin hardy stems and look bushy.

Q3. What are herbs?

Ans. Herbs are small plants which have soft and green stems and leaves.

Q4. What are climbers?

Ans. Climbers are the plants which have weak stem and need some support to grow.

Q5. What are creepers?

Ans. Creepers are the plants which have weak and tender stems and they grow along the ground.

Q6. What are the two main parts of a plant?

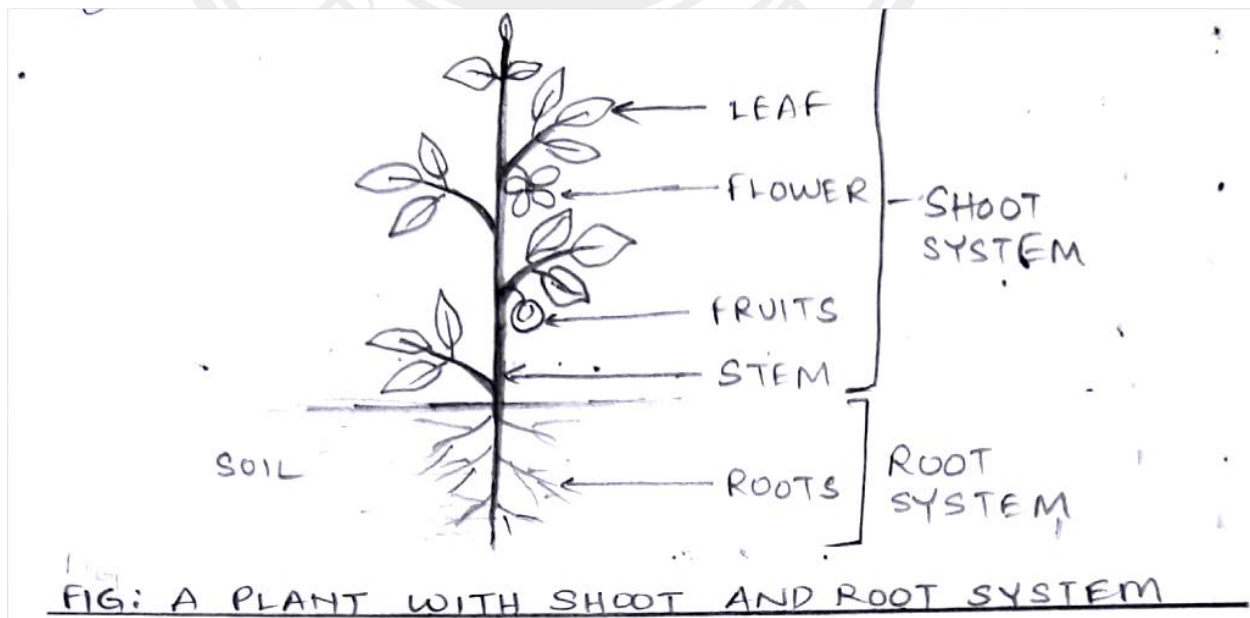
Ans. The two main parts of a plant are – shoot system and root system.

Q7. Write some important functions of root.

Ans. Some important functions of root are –

- i. It holds the plants firmly in the soil
- ii. They absorbed/suck in water and minerals from the soil and send it to other parts.

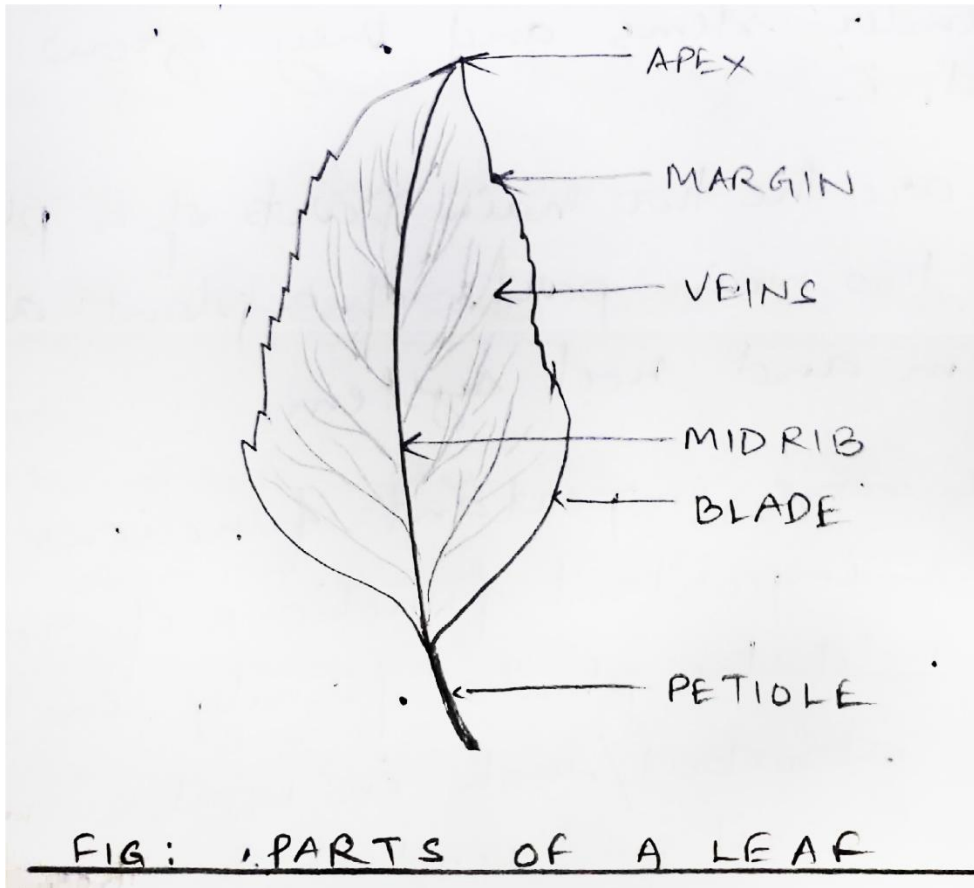
8. Draw a label diagram of a plant with shoot and root system.



9. What is a leaf blade?

Ans. The flat broad part of the leaf is called a leaf blade.

10. Draw a label diagram of a leaf showing its various parts.



11. Why do trees shed their leaves?

Ans. Trees shed their leaves to conserve water.

12. What is photosynthesis?

Ans. The process of preparation/manufacture of food by the green plants by using carbon dioxide and water as raw materials in presence of sunlight with the help of chlorophyll is known as photosynthesis.

III. State "true" or "False"

1. Chlorophyll is the green pigment present in leaves which helps to trap sunlight during photosynthesis. (True)
2. Leaf is known as the food factories for the plants. (True)

3. Trees shed leaves in March (False)
4. The upper part of the plants which is above the ground, is known as shoot system. (True)
5. Pea plant is a tree. (false)

IV. ACTIVITY/ASSIGNMENT:

1. Collect the broad and flat leaves of different shapes and sizes. Press the leaves under a heavy book for a few days, Stick the flattened and pressed leaves on paper and write the name of the plants.

